



Georgia Gwinnett
COLLEGE



Fact Book 2007-2008

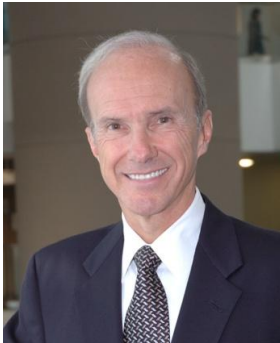
www.ggc.edu

Table of Contents

From the President	iii
From the Editors	iv
General Information	
About Georgia Gwinnett College 2007-08.....	2
Campus Guide and Directions	3
History.....	4
Vision, Mission Statement, and Institutional Goals	5
GGC Significant Achievements 2007-08	6
Academic Programs 2007-08.....	8
Administration and Organization	
Members of the Board of Regents 2007-08.....	10
Organizational Chart for Administration of the Board of Regents.....	10
Senior Administration of Georgia Gwinnett College 2007-08.....	11
Georgia Gwinnett College Foundation 2007-08.....	11
Organizational Chart 2007-08	12
Advancement	
Development 2007-08.....	14
Academic Support and Student Services	
Educational Technology 2007-08.....	16
Library 2007-08.....	17
Student Affairs 2007-08	18
Enrollment and Student Information	
Semester Enrollment 2007-08.....	20
Head Count, FTE.....	20
Load Type, Gender, Race/Ethnicity, Student Type (age factor)	20
Age Range	20
Load Type and Gender.....	21
Load Type and Race/Ethnicity	21
Gender and Race/Ethnicity	21
Classification	22
Load Type and Class.....	22
Gender and Class.....	22
Major	23
Load Type and Major.....	23
Gender and Major.....	23
Class Level in Biology	24
Class Level in Business.....	24
Class Level in Information Technology	24
Class Level in Psychology	24
Residency Type, Tuition Status	25
State of Origin	25
Georgia County of Origin.....	26
Citizenship Status.....	26
Country of Origin	27
Number of Countries Represented by Students of Non-US Citizenship.....	27

New Student Enrollment by Classification	28
Top Feeder Institutions for Transfer-in New Students.....	28
Course Enrollment by School 2007-08.....	29
School of Business.....	29
School of Liberal Arts	29
School of Science and Technology.....	30
Student Success	30
All College	30
Class Size by School 2007-08	31
Business.....	31
Liberal Arts	31
Science and Technology	31
Student Success	31
All College	31
Student Financial Aid 2007-08	32
Semester Details.....	32
Award Year Total.....	32
Cost of Attendance 2007-08.....	33
Tuition and Fees	34
Faculty and Staff	
Human Resources 2007-08	36
Corps of Instruction Fall 2007	37
Function Area 2007	37
Rank and Function Area.....	37
Gender and Function Area	37
Ethnicity and Function Area.....	37
Highest Earned and Function Area.....	37
Full-time Instructional Faculty Fall 2007	38
Faculty Rank	38
Highest Earned Degree and Rank	38
Gender and Rank.....	38
Ethnicity and Rank.....	38
College Employees Fall 2007.....	39
Occupational Classification.....	39
Employment Status and Occupational Classification	39
Gender of College Employees	40
Ethnicity of College Employees	40
Financial Information & Facilities	
Financial Information 2007-08.....	42
Statement of Revenues, Expenses, and Changes in Net Assets	42
Revenue by Source	43
Expenses (by Functional Classification)	43
Facilities 2007-08.....	44
About Gwinnett County	
Fast Facts About Gwinnett County 2007-08.....	46

From the President



Georgia Gwinnett College (GGC) is pleased to provide this publication of its annual *Fact Book*. It documents a robust and definitive volume of information that reflects the College's status during its second year of collegiate operations on its Lawrenceville, Georgia campus.

The College opened its doors to its first students in August 2006 and continues to grow each semester in student enrollment, faculty and staff, facilities and acreage. Our strategic plan maps the path toward a vision of a 21st Century open-access liberal arts college where faculty engagement in teaching and faculty mentoring of students serve as a national model for innovative approaches to public higher education. GGC continues to garner high quality faculty, a diverse and engaged student body, and the resources necessary to fulfill its mission for the greater Gwinnett County and northeast metropolitan Atlanta communities.

By the date of publication of our 2007-2008 information, the College had increased its enrollment five-fold to nearly 5,000, added another 100 faculty to its current 200+ level, earned final institutional accreditation from the Southern Association of Colleges and Schools, held five commencement ceremonies, and was certified to administer over \$11 million in federal financial aid programs. Perhaps equally important, the students chose the name "General" for their mascot Grizzly Bear! The Georgia Gwinnett College Foundation maintained its tax-exempt status and continued operations that led to the construction of buildings and land acquisitions, so that the campus now includes 1,023 residential housing beds for students, robust parking and more warehousing space. Further, the new library, student center, book store and dining operations are set to open in Fall 2010. The College has accomplished much in a very short period while establishing and sustaining superb academic and student services programs for all of its students while achieving above average student retention rates.

A quick scan of this book's table of contents reveals the breadth of information available to the reader who desires to learn more about the history, organizational structure, finances, demographics, facilities, plans and programs related to this splendid campus. I hope it contributes to your knowledge of and interest in our college—past, present and future.

Go Grizzlies!

A handwritten signature in black ink that reads "Daniel J. Kaufman". The signature is written in a cursive, flowing style.

Daniel J. Kaufman
President

May 2010

From the Editors

This Fact Book documents the second year, 2007-2008, of institutional information about Georgia Gwinnett College (GGC). This book provides information about the following areas: organization, students and enrollment, faculty and staff, financial information and facilities.

As a member institution of the University System of Georgia (USG), GGC's data systems are hosted and supported by the central Office of Information and Instructional Technology (OIIT) of USG Information Systems. Until the academic year of 2006-2007, OIIT employed the legacy information systems, mainly, Student Information Reporting System (SIRS) and Curriculum Inventory Reporting (CIR). Beginning with the 2007-2008 academic year, the legacy systems were phased out and transitioned to a new system, Academic Data Mart (ADM). During the transitional period, several data inconsistencies were discovered in both ADM and the legacy system files.

However, in this book, the legacy files of SIRS and CIRS were still used as the primary data sources to generate the majority of student and enrollment information. Academic Data Mart files were also used and referenced where applicable. Faculty and Staff information was generated based on the datasets provided by the Office of Human Resources.

Measures were taken to ensure that data published in the Fact Book are consistent with those published by USG. Notes and explanations are provided when discrepancies occurred between two sources.

Our thanks go to the offices that made contributions to this publication including: Office of the President, Office of Academic and Student Affairs, Office of Educational Technology, Financial Affairs, Human Resources, Facilities, Student Affairs, Student Financial Aid, Library, Development, and Public Affairs.

Lily Hwang
Director of Institutional Research

Austen L. Krill
Research Associate

April 2010



Georgia Gwinnett
COLLEGE



General Information

www.ggc.edu

About Georgia Gwinnett College 2007-08

Georgia Gwinnett College opened its doors to students on August 18, 2006 as the first new four-year public college created in Georgia in more than 100 years; furthermore, it is the first new four-year public college created in the nation in the 21st century.

Location

1000 University Center Lane, Lawrenceville, GA 30043 678-407-5000 www.ggc.usg.edu

GGC is located in Lawrenceville, Georgia, in the heart of Gwinnett County. Gwinnett County is a vibrant community 30 miles northeast of downtown Atlanta where a mixture of quiet postcard neighborhoods and bustling commercial districts blend the past with the present. Gwinnett County remains one of the most dynamic regions in the south to live and work with a current population of 777,000, and a population of 1.2 million projected by the year 2025.

Academic Programs 2007-08

Business Administration (B.B.A.) Biology (B.S.)
Information Technology (B.S.) Psychology (B.S.)

Student and Enrollment

The inaugural freshman class was admitted in Fall 2007.

Fall 2007 Enrollment: **788** FTE: **696** **Spring 2008** Enrollment: **867** FTE: **753**

Faculty (Fall 2007)

Full-time Corps of Instruction: **103** Instructional Faculty: **86** College Employees: **219**

Student to Faculty Ratio (FTE ratio of Fall 2007): 8.4/1

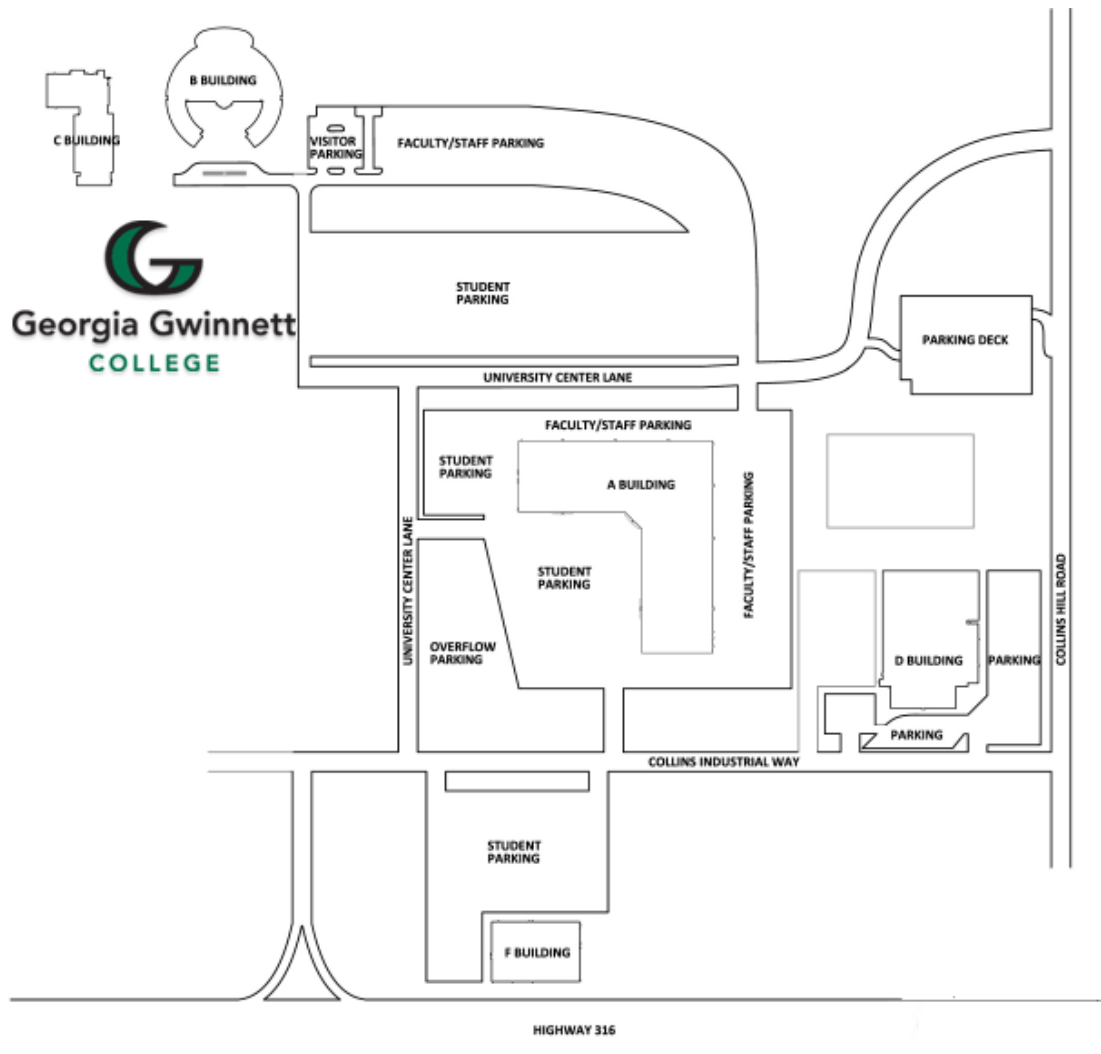
Finance (FY 2008)

Total revenues exceeded \$29 million, including \$23 million from state appropriations. 40% of total operational expenditures (approximately \$25 million) accounted for instruction.

2007-08 Tuition and Fees

Tuition: New and Existing Students Tuition per credit hour		In-State	Out-of-State
Incoming freshmen		\$78	\$312
Continuing and transfer students with less than 60 attempted hours (began at a USG school between Fall 2006 and Summer 2007)		\$68	\$268
Continuing and transfer students with less than 60 attempted hours (began at a USG school before Fall 2006)		\$74	\$296
Continuing and transfer students with more than 60 attempted hours (first time at a USG school)		\$120	\$478
Continuing and transfer students with more than 60 attempted hours (began at a USG school between Fall 2006 and Summer 2007)		\$107	\$427
Continuing and transfer students with more than 60 attempted hours (began at a USG school before Fall 2006)		\$113	\$449
Fees (per semester)			
Activity Fee = \$35	Technology = \$75	Non Sufficient Funds Fine = \$25 (or 5%, whichever greater)	
Parking Fee = \$100	Parking Fine = \$30		
Recreation = \$40	ID Replacement = \$30	Science Lab = \$30 per lab (only for students taking a lab)	
Student Center = \$100	Application Fee = \$15		

Campus Guide and Directions



From Atlanta: Take I-85 North for 24 miles to Highway 316/University Parkway. Travel 6.6 miles and turn left at the first traffic light (Collins Hill Road). Travel 0.2 miles on Collins Hill Rd. and turn left into the Campus East Entrance. The Admissions office is in the first building on the right.

From Duluth: From downtown Duluth, travel East on Duluth Hwy (120) for 4.3 miles. Turn right onto Sugarloaf Parkway and continue to Highway 316 (1.4 miles). Exit left onto Highway 316 East towards Athens. Travel four miles and turn left at the first traffic light (Collins Hill Road). Travel 0.2 miles on Collins Hill Rd. and turn left into the Campus East Entrance.

From Snellville: Take Highway 124 S.W. (approx. 6.5 miles) into Lawrenceville. Follow the signs to Highway 316. Turn left onto Highway 316. Travel 0.8 miles to the first intersection, Collins Hill Road and turn right. Turn right onto Collins Hill Road. Travel 0.2 miles on Collins Hill Rd. and turn left into the Campus East Entrance. The Admissions office is in the first building on the right.

From Greenville: Take I-85 South to Exit 115. Exit onto Highway 20. Merge into the right lane, traveling eastbound towards Lawrenceville. Follow Highway 20 to Russell Road (4.7 miles) and turn right. Travel 1.6 miles and turn left onto Collins Hill Road. Travel 1.8 miles to University Center Lane and turn right into the Georgia Gwinnett College campus.

Source: www.ggc.edu

History

GGC was chartered by the Board of Regents of the University System of Georgia (USG) as “a true 21st Century higher education institution.” The college will be a leader in the use of instructional technology and other innovative educational methods, and in the assessment of student learning to enhance education. Designated as an institution with a principal responsibility for developing innovative approaches to higher education, the college will offer bachelor degree programs in a variety of disciplines. In addition, the college will serve as a unit of the USG that is focused by design on highly efficient approaches to student and administrative services.

GGC currently offers junior-level courses and will provide full degree programs in fall 2007. Programs initially will focus on four areas that are important to meeting the needs of the region and the state including biology, business, information technology and psychology. In following years, degrees in education and nursing are projected to be part of the curriculum.

Significant Firsts

Georgia Gwinnett College is the first public four-year liberal arts college to be founded in the United States in the 21st Century according to the American Council on Education. It also is the first four-year college to be founded in Georgia in more than 100 years. It is the product of visionary leadership by the community, the University System of Georgia Board of Regents and the State Legislature (Georgia General Assembly).

GGC was founded in response to a regional need. For more than 15 years, community leaders have pressed for a four-year college in Gwinnett. As the county grew rapidly, it was evident that the expanding business community needed a source of qualified candidates for its workforce. Local high schools now produce an increasing number of graduates who need more options for higher education. It was clear that the county needed a four-year college of its own, one that embraced new technologies and teaching methods appropriate to the 21st Century.

A resolution was passed by the University System of Georgia Board of Regents in October 2004, and the college was established by the Georgia General Assembly in March 2005. As the University System of Georgia’s model campus, it would create opportunities to provide innovative approaches to highly-efficient student, facility and administrative services.

The college held its first classes on Friday, August 18, 2006 at its Lawrenceville campus and 118 students attended classes as part of the first fall enrollment. In Fall 2007, the first Freshman class joined GGC. The first graduation ceremony was held in June, 2008.

Vision, Mission Statement, and Institutional Goals

Vision

Georgia Gwinnett College will be a premier 21st Century Liberal Arts College where learning will take place continuously in and beyond the confines of the traditional classroom. Its cornerstones will be innovative use of educational technology and a commitment to an integrated educational experience that develops the whole person. GGC will be a wellspring of educational innovation. It will be a dynamic learning community where faculty engagement in teaching and mentoring students will be the hallmark. It will be a driving force for change in student success. As such, it will be a model for innovative approaches to education, faculty engagement with students, and highly efficient student, facility, and administrative services.

Key elements in this vision include:

- Learning in and beyond the classroom
- Innovative use of educational technology
- An integrated educational experience (academic and co-curricular)
- Faculty engagement in teaching and mentoring to support student success
- A model for innovative approaches to education, student engagement, and services.

Mission Statement

Georgia Gwinnett College provides access to targeted baccalaureate-level degrees that meet the economic development needs of the growing and diverse population of the northeast Atlanta metropolitan region. It emphasizes the innovative use of technology and active-learning environments to provide students enhanced learning experiences, practical opportunities to apply knowledge, increased scheduling flexibility, and a variety of course delivery options. Georgia Gwinnett College's outstanding faculty and staff actively engage students in various learning environments, serve as mentors and advisors, and assist students through programs designed to enhance their academic, social, and personal development. GGC produces contributing citizens and future leaders for Georgia and the nation. Its graduates are inspired to contribute to the local, state, national, and international communities and are prepared to anticipate and respond effectively to an uncertain and changing world.

Source: GGC Student Handbook 2007-2008

Institutional Goals

As a charter 21st Century Institution GGC will:

- Produce graduates who can anticipate and respond effectively to the changing world.
- Inspire graduates to be contributing citizens and community leaders.
- Achieve significant levels of student success in retention, progression and graduation.
- Innovatively design and deliver educational programs and support services.
- Engage with Gwinnett and surrounding communities to support student development and community needs.
- Create a culture devoted to the holistic development of students.
- Acquire the resource base needed to accomplish its mission and vision.
- Serve as a resource for innovation for the broader educational community.

GGC Significant Achievements 2007-08

Georgia Gwinnett College acquired building. GGC Foundation officials announced on August 10, 2007, the purchase of a 70,000 square-foot building located adjacent to the College's property. The building, constructed in the early 1990s, currently houses Valentine Enterprises, a long-time Gwinnett company, and producer of health concentrate. Valentine Enterprises will lease the facility from the GGC Foundation for three years. The future uses of the building include office and warehouse storage space.

Gwinnett Delegation visited new college on Aug. 14, 2007 to hear the plans for GGC's first-ever freshman class expected to arrive on August 20. The College had just hired 85 new faculty members, was preparing to build a new library, and had its eye set on the future growth of the campus, its programs and its ability to serve the citizens of Gwinnett County and beyond.

Secretary of State Karen Handel visited campus in August to hear Georgia Gwinnett College's plans for its first-ever freshman class and the years of growth ahead.

First freshman class headed for Georgia Gwinnett College on Aug. 20, 2007. Close to 750 students flowed onto this high-tech "campus of tomorrow."

Eighty-five new faculty members wrapped-up orientation, prepared for students. Georgia Gwinnett College hired 85 new professors, and opened August 20 with almost 100 faculty members, and about 750 students, and majors including biology, business, information technology, and psychology.

First-ever Student Government Association (SGA) was created in September, 2007. To formally recognize and celebrate the establishment of the SGA, student officers from the organization presented the inaugural constitution to GGC's Vice President for Academic and Student Affairs Dr. Stas Preczewski for signature.

State Superintendent Kathy Cox visited GGC campus in October, 2007.

GGC's New Student Services Center opened on Monday, Oct. 22, 2007.

SACS candidacy visit authorized for Georgia Gwinnett College on Dec. 10 2007. The candidacy visit was required for GGC to achieve candidacy status in the accreditation process.

Georgia Gwinnett College Foundation entered in agreement to purchase the Fitness International facility in January 2008, including all of its sports and training equipment, for \$5.5 million. The purchase also included two acres of land located on Ga. Hwy 316. The 36,862-square-foot facility provides Georgia Gwinnett College students access to recreation facilities including work-out equipment, basketball and racquetball courts, and a pool.

Go Grizzlies! GGC President Daniel J. Kaufman and Student Government Association President William Johnson announced the new mascot on March 6, 2008 at an unveiling celebration. The students selected the Grizzlies as their new mascot.

Georgia Gwinnett College Foundation Gala was held March 8, 2008.

The new 300-seat high-tech auditorium at Georgia Gwinnett College was named: The Cisco Auditorium, March 9, 2008. Thanks to a \$300,000 gift from the Scientific Atlanta Foundation, GGC students, employees and members of the community will now be able to utilize a spacious and modern gathering place for classes and meetings.

GGC's inaugural convocation was held March 20, 2008.

Bartow Morgan gave major gift to GGC Foundation in April. The unrestricted \$100,000 gift was donated by Gwinnett banker and GGC Foundation Board of Trustee member Bartow Morgan on behalf of The Brand Banking Company.

One of GGC's first graduates bound for Harvard. Andrea Ide made history as part of the Georgia Gwinnett College charter graduating class, and now she is prepared to take on even bigger first-time challenges. The psychology major from Suwanee was accepted for graduate work at Harvard University – a first in GGC's history.

Ribbon-cutting for new parking deck hinted of big growth ahead on April 29, 2008. The new five-story, 737-car parking facility on the campus of Georgia Gwinnett College was a sign of things to come.

GGC received unprecedented state support (May 2, 2008). The Board of Regents approved Georgia Gwinnett College's 2008 operating budget and capital allocation pending the Governor's signing of the fiscal year 2008 Appropriations Act. \$22.6 million was allocated by the Regents to GGC's operating budget which was bolstered by \$10 million in cash appropriated by the Georgia General Assembly to help prepare the college for its first freshman class in August 2007. A new library and learning resources center was also funded at \$28.3 million.

GGC students embarked on first European "dream trip" in May for business and marketing students as the College's first-ever study abroad offering.

New fitness center opened May 16, 2008. The former Fitness International workout complex near the intersection of Highway 316 and Collins Hill Road that was purchased by the Georgia Gwinnett College Foundation last January has undergone a "campus" makeover, and opened to GGC students, faculty, and staff.

GGC achieved SACS candidacy milestone. SACS announced its decision to grant GGC candidacy status towards its accreditation on June 26, 2008.

Inaugural Commencement for GGC and its pioneer graduates was held on June 28, 2008, with Georgia Lt. Governor Casey Cagle delivering the inaugural commencement address.

Source: Office of Public Affairs

Academic Programs 2007-08

Academic Program/ <i>Concentration</i>	Degree Offered
School of Business	
Business Administration	B.B.A.
<i>Accounting</i>	
<i>Finance</i>	
<i>General Business</i>	
<i>Marketing</i>	
School of Science and Technology	
Biology	B.S.
<i>Cell Biology and Biotechnology</i>	
<i>General Biology</i>	
Information Technology	B.S.
<i>Business</i>	
<i>Software Development</i>	
<i>Systems and Security</i>	
School of Liberal Arts	
Psychology	B.S.
<i>Biological/Neuroscience</i>	
<i>Cognitive/Learning</i>	
<i>Clinical/Personality</i>	
<i>Developmental/Education</i>	
<i>Social/Applied</i>	

Source: Georgia Gwinnett College 2007-2008 Catalog



Georgia Gwinnett
COLLEGE



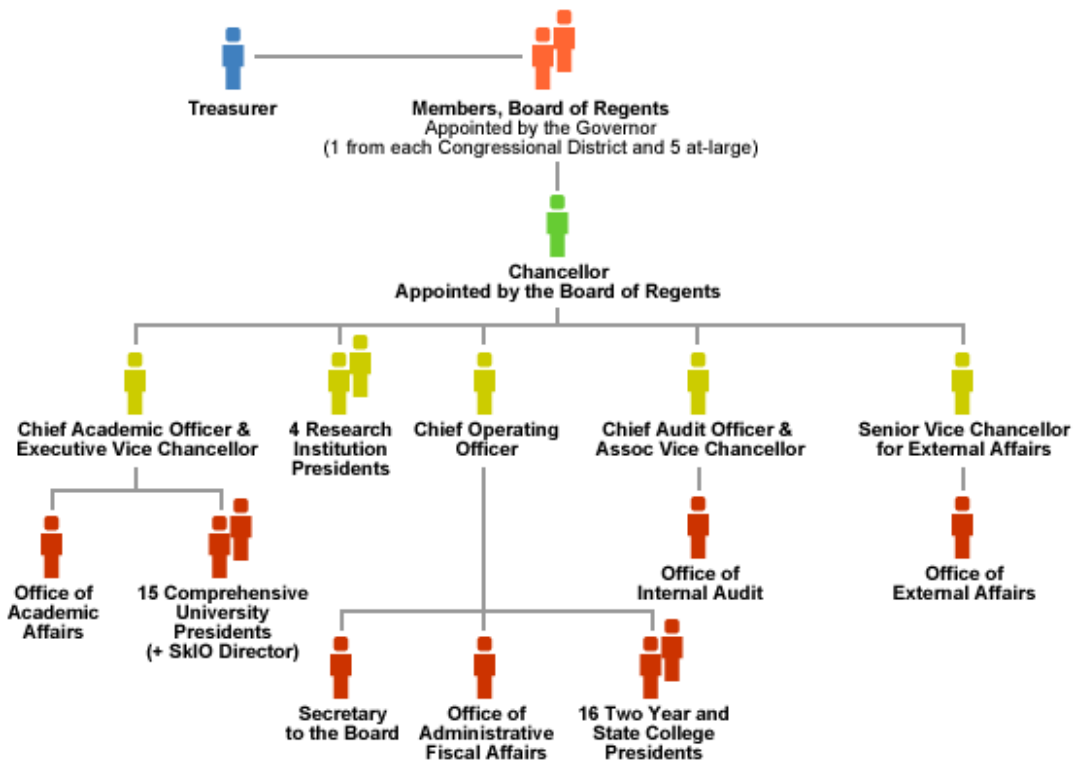
Administration and Organization

www.ggc.edu

Members of the Board of Regents 2007-08

Regent	District	Term
Kenneth R. Bernard, Jr.	Thirteenth	(01/01/07 - 01/01/14)
James A. Bishop	First	(01/01/07 - 01/01/11)
Hugh A. Carter, Jr.	At-Large	(08/08/00 - 01/01/09)
William H. Cleveland	At-Large	(10/04/01 - 01/01/09)
Robert F. Hatcher, Vice Chair	At-Large	(01/06/06 - 01/01/13)
Felton Jenkins	At-Large	(01/06/06 - 01/01/13)
W. Mansfield Jennings, Jr.	Eighth	(01/06/06 - 01/01/13)
James R. Jolly	Ninth	(01/01/08 - 01/01/15)
Donald M. Leebern, Jr.	At-Large	(01/01/05 - 01/01/12)
Elridge McMillan	Fifth	(01/01/03 - 01/01/10)
William NeSmith, Jr.	Tenth	(03/13/08 - 01/01/15)
Doreen Stiles Poitevint	Second	(01/13/04 - 01/01/11)
Willis J. Potts, Jr.	Eleventh	(03/07/06 - 01/01/13)
Wanda Yancey Rodwell	Fourth	(01/01/05 - 01/01/12)
Kessel Stelling, Jr.	Sixth	(01/01/08 - 01/01/15)
Benjamin J. Tarbuton, III	Twelfth	(01/06/06 - 01/01/13)
Richard L. Tucker, Chair	Seventh	(01/28/05 - 01/01/12)
Allan Vigil	Third	(08/06/03 - 01/01/10)

Organizational Chart for Administration of the Board of Regents



Source: University System of Georgia website (Content Modified on February 21, 2008)

Senior Administration of Georgia Gwinnett College 2007-08

Daniel J. Kaufman	President	Victoria Johnson	Dean for School of Business
Stanley Preczewski	Vice President for Academic & Student Affairs	Cathy Moore	Dean for School of Education
Eddie Beauchamp	Vice President for Business & Finance	Thomas Mundie	Dean for School of Science & Technology
Gordon Harrison	Vice President for Advancement	Lois Richardson	Dean for School of Liberal Arts
Lonnie Harvel	Vice President for Educational Technology	Mary Greiss-Shipley	Director for Student Success Programs

Georgia Gwinnett College Foundation 2007-08

Board of Trustees

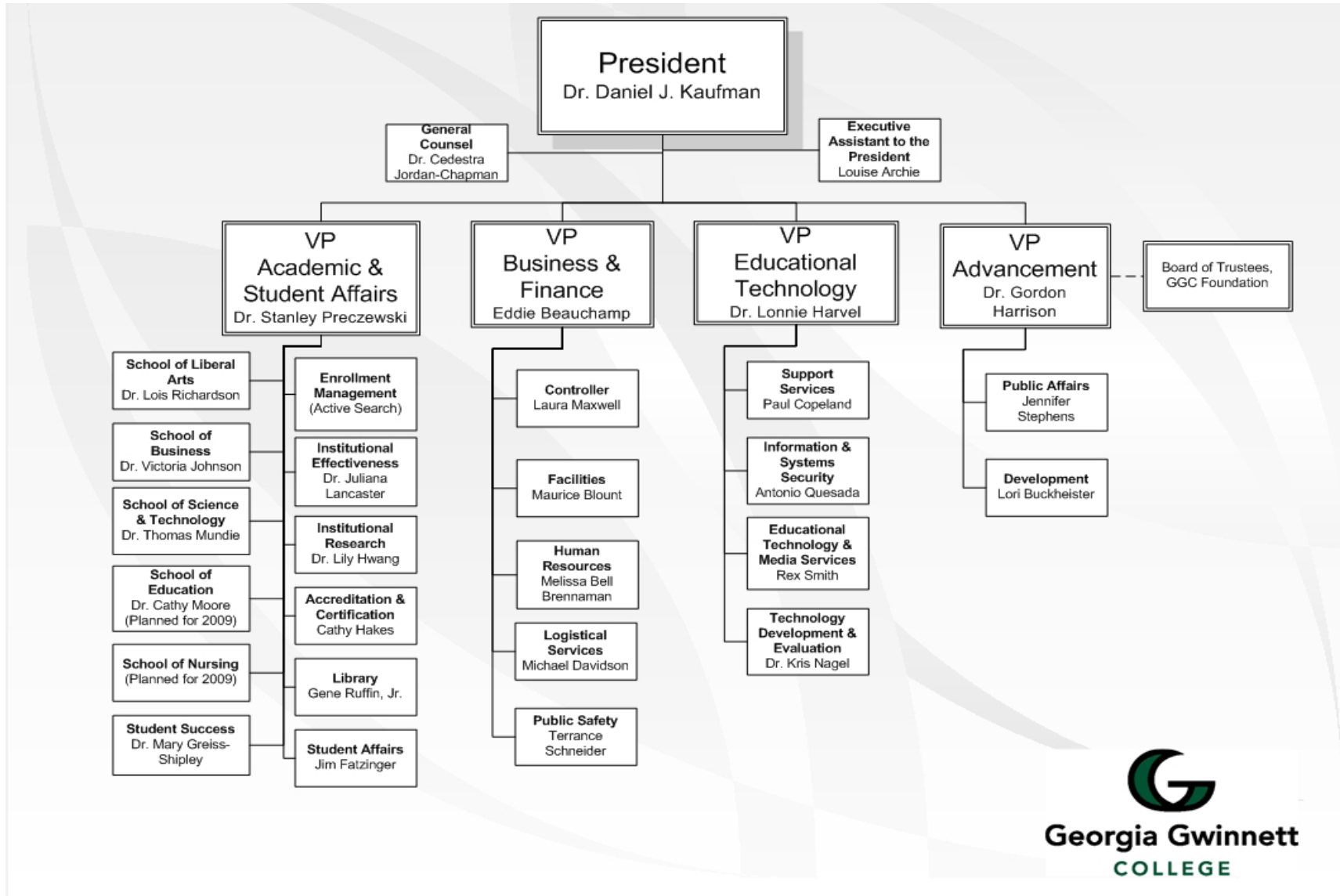
Glenn S. White (Chair)
 Daniel J. Kaufman (Vice Chair)
 R. Wayne Shackelford (Secretary Treasurer)
 Gordon A. Harrison (President)
 David J. Bowen
 Renee Byrd-Lewis
 Gregory W. Hayes*
 Thomas P. Hughes
 Wayne H. Mason
 Bartow Morgan, Jr.
 Jose R. Perez
 Richard L. Tucker
 Constance C. Wiggins

Trustees

Thomas J. Anderson	D. Alan Najjar
W. Kerry Armstrong	Charlotte Nash
Sharon Bartels	Cathy Petty Nichols
J. W. Benefield	J. Philip Reed, Jr.
Marsha Anderson Bomar	William E. Russell
W. Stacey Britt	Raymer M. Sale, Jr.
Richard B. Chandler, Jr.	David M. Seago
Jock A. Connell	Michael M. Sobh
Douglas W. Cotter, Jr.	John D. Stephens
Ronald H. Garrard	J. Leland Strange
J. Terry Gordon	W. Gordon Tanner
Paige W. Havens	T. Michael Tennant
Stephen K. Hill	R. Lee Tucker, Jr.
William D. Humphries	Judy F. Waters
Barbara T. King	Ed Weinlein
Mani Krishnaswamy	J. Alvin Wibanks
James J. Maran	Philip R. Wolfe
Thomas J. Martin	Anthony L. Wood, Jr.
J. Michael McGarity	

*non-voting member
 Source: GGC Foundation Office

Organizational Chart 2007-08



Source: Office of Vice President for Academic & Student Affairs



Georgia Gwinnett
COLLEGE



Advancement

www.ggc.edu

Development 2007-08

Purpose of Support

	2006-2007	2007-2008
Total by Purpose: Outright and Deferred Combined	\$565,018.57	\$407,963.00
Outright Support for Current Operations	\$465,018.57	\$386,751.00
Unrestricted	\$448,896.57	\$371,816.00
Restricted	\$16,122.00	\$14,935.00
Outright Support for Capital Purposes	\$100,000.00	\$21,212.00
Property, Buildings, Equipment	\$100,000.00	NA
Endowment: Income Restricted	NA	\$21,212.00

Source of Support

Total by Source (include Deferred Gifts At Present Value)	\$565,018.57	\$407,963.00
Individuals	\$283,916.57	168,283.00
Alumni	NA	\$1,189.00
Others	\$283,916.57	\$167,094.00
Organizations	\$281,102.00	\$239,680.00
Foundations	\$4,502.00	\$22,280.00
Corporations	\$271,500.00	\$141,600.00
Other Organizations	\$5,100.00	\$75,800.00

Highlighted Details

Alumni Giving		
Alumni of Record		17
Alumni Solicited		17
Alumni Donors		17
Sums of Three Largest Gifts from		
Living Individuals	\$283,345.57	\$92,040.00
Foundations	\$4,502.00	\$10,000.00
Corporations	\$260,000.00	\$100,000.00
Endowment (Market Value)	NA	\$21,212.00

Source: Office of GGC Foundation



Georgia Gwinnett
COLLEGE

Academic Support and Student Services

www.ggc.edu

Educational Technology 2007-08

Computers/Facilities/Services

	2006-07	2007-08
Total number of computers available to all students	215	482
Classrooms (including computer labs)	163	404
Library	52	62
Student Center		
Elsewhere on Campus		16
Internet access	All students	All students
e-mail services/accounts	All students	All students
Wireless network available		
Classrooms	Yes	Yes
Computer labs	Yes	Yes
Library	Yes	Yes
Faculty offices	Yes	Yes
Elsewhere (other campus buildings)	Yes	Yes
Number of open, wired network connections available to students:	112 (Computer labs)	150 (Computer labs)
Students web pages permitted	No	No
Online registration for classes	Yes	Yes
Recommended computer operating system on campus	Primarily Microsoft Windows. Mac, Unix and Linux are also supported.	Primarily Microsoft Windows. Mac, Unix and Linux are also supported.
Is every student required to take a computer course?	Yes	Yes
Is every student required to lease or own a computer?	Yes	Yes

Source: Educational Technology

Library 2007-08

	2006-07	2007-08
Collection Information		
Bound Volumes	20,483	25,115
Current Periodical Subscriptions	282	389
Current Newspaper Subscriptions	9	11
Current Serial Subscriptions	131	131
Microform Units: periodical titles	89	89
Microform Units: newspaper titles	3	3
Video titles (cassettes, discs, and tapes)	348	727
Audio titles (cassettes, discs, and tapes)	2	2
Databases, GGC Purchased	1	49
Databases, GALILEO Scholar	260	287
Library Usage		
Circulation	7,236	6,634
Interlibrary Loan, items loaned	86	151
Interlibrary Loan, items borrowed	65	69
GIL Express, GGC items loaned	602	957
GIL Express, GGC as pickup location	952	1,327
Library Instruction Sessions	88	121
Gate Count	119,157	124,518
Reference Transactions	4,463	2,770
Website Hits	61,180*	170,512

* Data only available from March 2007

Source: GGC Library

Student Affairs 2007-08

Student Affairs Team

Jim Fatzinger, Associate Vice President
Jennifer Arrocena, Director, Disability Services
Dr. Devi Drexler, Dean, Student Development Services
Regina Vella, Director, Career Development and Advising Center
Kathy Wagoner, Administrative Assistant

Student Affairs Faculty Committee

Dr. Holly Haynes, Chairperson

Student Affairs Areas

Disability Services

The Office of Disability Services encourages all students to reach their full potential, both academically and personally, by providing equal access to classes and campus life in support of the institution's mission in compliance with local, state, and federal guidelines.

The Career Development and Advising Center

The Career Development and Advising Center works collaboratively with the campus community to develop relationships with students, faculty, employers, and external constituencies while providing services which contribute to the career preparation, recognition, achievement, and holistic development of students.

Student Clubs/Organizations

Biology Club - founded to provide students additional opportunities to learn about biology outside the classroom or laboratory setting.

Georgia Gwinnett Golden Guild (4Gs) – established to provide guidance to non-traditional students re-entering college while promoting Growth, Goals, & Grades.

Psychology Club - founded to create a forum for learning about psychology, to increase awareness regarding careers in psychology, and to promote community service.

Student Government Association (SGA) – established to promote students' social and cultural well-being by promoting students' rights and responsibilities to the college, the community, and humanity.

Organization of Latin American Students (OLAS) – founded to support the academic and civic achievements of Hispanic students at GGC.

SCRUBS (Starting Careers and Research Using a Bachelors of Science) – established to provide students information about admissions and careers in professional fields including: dentistry, medicine, pharmacy, and veterinary medicine.

Notable Student Projects

Gwinnett Great Days of Service
Relay for Life
SGA Constitution Signing
Stream Clean

Notable Openings

Building D -- Student Services Center "One-stop-shop"

Source: Office of Student Affairs



Georgia Gwinnett
COLLEGE

Enrollment and Student Information

www.ggc.edu

Semester Enrollment 2007-08

Headcount, FTE

	Summer 2007		Fall 2007		Spring 2008	
	#	FTE	#	FTE	#	FTE
Current Enrollment	88*	33	788	696**	867	753**

*The Semester Enrollment Report (SER, published by the University System of Georgia (USG), reported 75 students for Summer 2007 as some students were not reported in Census I data collection due to coding errors. The total summer enrollment should be 88.

** FTE herein differs by 1 from that in SER due to a known issue of truncating at decimal point in USG SER.

Load Type, Gender, Race/Ethnicity, Student Type (age factor)

	Summer 2007		Fall 2007		Spring 2008	
	#	%	#	%	#	%
Full-time	1	1.1	548	69.5	587	67.7
Part-time	87	98.9	240	30.5	280	32.3
Female	55	62.5	416	52.8	449	51.8
Male	33	37.5	372	47.2	418	48.2
Black, Non-Hispanic	10	11.4	88	11.2	95	11
Am. Indian, Alaskan Native			1	0.1		
Asian or Pacific Islander	9	10.2	105	13.3	109	12.6
Hispanic	1	1.1	51	6.5	55	6.3
Multiracial	4	4.5	14	1.8	18	2.1
White, Non-Hispanic	60	68.2	456	57.9	500	57.7
Race Unknown	4	4.5	73	9.3	90	10.4
Non-traditional Student	57	64.8	200	25.4	212	24.5
Traditional Student	31	35.2	588	74.6	655	75.5
Total	88	100	788	100	867	100

Non-traditional students: 25 or older; Traditional students: under 25 (at the time of matriculation).

Non-traditional Undergraduate***	Summer '07	55	Fall '07	195	Spring '08	212
---	-------------------	-----------	-----------------	------------	-------------------	------------

***Refers to Degree-seeking undergraduates only (Numbers reported in USG SER).

Age Range

Age Range	Summer 2007			Fall 2007			Spring 2008		
	Mean	#	%	Mean	#	%	Mean	#	%
Under 18				17.0	9	1.1	16.5	2	0.2
18-22	21.7	23	26.1	19.2	511	64.8	19.4	552	63.7
23-34	28.0	43	48.9	26.8	187	23.7	26.6	223	25.7
35-44	40.1	13	14.8	39.4	48	6.1	39.3	60	6.9
45 and over	48.2	9	10.2	49.6	33	4.2	51.0	30	3.5
Average/All*****	30.8	88	100	23.9	788	100	24.2	867	100

*****Average age of all students is based on a pool of ages calculated using the difference between a birth date and a fixed date in a given semester, divided by 365.25 without rounding to an integer; then the sum of this age pool is divided by the total of students, rounded up to 1 decimal place. Age Mean, if calculated for each Age Range, may not be same as the average age calculated using the method stated above. Source of all items on the page: Revised Student Information Reporting System (SIRS)

Load Type and Gender

	Summer 2007			Fall 2007			Spring 2008		
	Part-time	Full-time	Total	Part-time	Full-time	Total	Part-time	Full-time	Total
Female	54	1	55	144	272	416	160	289	449
Male	33		33	96	276	372	120	298	418
Total	87	1	88	240	548	788	280	587	867

Load Type and Race/Ethnicity

	Summer 2007			Fall 2007			Spring 2008		
	Part-time	Full-time	Total	Part-time	Full-time	Total	Part-time	Full-time	Total
Black, Non-Hispanic	10		10	28	60	88	30	65	95
Am. Indian, Alaskan Native					1	1			
Asian or Pacific Islander	9		9	27	78	105	29	80	109
Hispanic	1		1	14	37	51	17	38	55
Multiracial	4		4	3	11	14	6	12	18
White, Non-Hispanic	59	1	60	142	314	456	167	333	500
Race Unknown	4		4	26	47	73	31	59	90
Total	87	1	88	240	548	788	280	587	867

Gender and Race/Ethnicity

	Summer 2007			Fall 2007			Spring 2008		
	Female	Male	Total	Female	Male	Total	Female	Male	Total
Black, Non-Hispanic	10		10	60	28	88	64	31	95
Am. Indian, Alaskan Native					1	1			
Asian or Pacific Islander	5	4	9	52	53	105	57	52	109
Hispanic	1		1	30	21	51	31	24	55
Multiracial	3	1	4	8	6	14	10	8	18
White, Non-Hispanic	34	26	60	227	229	456	242	258	500
Race Unknown	2	2	4	39	34	73	45	45	90
Total	55	33	88	416	372	788	449	418	867

Source of all items on the page: Revised Student Information Reporting System (SIRS)

Classification

Class	Summer 2007		Fall 2007		Spring 2008	
	#	%	#	%	#	%
Joint Enrollment			1*	0.1		
Freshman			468	59.4	497	57.3
Sophomore	10	11.4	75	9.5	83	9.6
Junior	56	63.6	178	22.6	162	18.7
Senior	20	22.7	57	7.2	113	13.0
Transient	1	1.1	3	0.4	6	0.7
Other**	1	1.1	6	0.8	6	0.7
2-Level Classification						
Lower Level***	10	11.4	544	69.0	580	66.9
Upper Level	76	86.4	235	29.8	275	31.7
Transient and Other	2	2.2	9	1.2	12	1.4
Total	88	100	788	100	867	100

*GJC did not admit Joint Enrollment students in 07-08. This student was misrepresented due to an error in coding.

**Other is defined by the USG SER as Auditors, Unclassified Undergraduate- i.e., non-degree seeking student with a bachelor's degree who is enrolled in undergraduate courses for credit.

***Lower level includes the following: Freshman, Sophomore, and Joint Enrollment.

Load Type and Class

	Summer 2007			Fall 2007			Spring 2008		
	Part-time	Full-time	Total	Part-time	Full-time	Total	Part-time	Full-time	Total
Freshman				85	383	468	94	403	497
Sophomore	10		10	31	44	75	38	45	83
Junior	55	1	56	94	84	178	90	72	162
Senior	20		20	24	33	57	46	67	113
All Others****	2		2	6	4	10	12		12
Total	87	1	88	240	548	788	280	587	867

****"All Others" includes: Joint Enrollment, auditor, and post-baccalaureate. The aforementioned Joint Enrollment coding error is also present in this category.

Gender and Class

	Summer 2007			Fall 2007			Spring 2008		
	Female	Male	Total	Female	Male	Total	Female	Male	Total
Freshman				231	237	468	237	260	497
Sophomore	6	4	10	43	32	75	46	37	83
Junior	36	20	56	99	79	178	86	76	162
Senior	12	8	20	38	19	57	71	42	113
All Others	1	1	2	5	5	10	9	3	12
Total	55	33	88	416	372	788	449	418	867

Source of all items on the page: Revised Student Information Reporting System (SIRS)

Major

	Summer 2007		Fall 2007		Spring 2008	
	#	%	#	%	#	%
Biology	2	2.3	107	13.6	99	11.4
Business	65	73.8	344	43.7	375	43.3
Information Technology			54	6.9	66	7.6
Psychology	21	23.9	125	15.9	134	15.5
Undecided			158	20.1	193	22.3
Total	88	100	788	100	867	100

Major is self-declared by the students.

Load Type and Major

	Summer 2007			Fall 2007			Spring 2008		
	Part-time	Full-time	Total	Part-time	Full-time	Total	Part-time	Full-time	Total
Biology	2		2	22	85	107	24	75	99
Business	64	1	65	126	218	344	145	230	375
Information Technology				17	37	54	19	47	66
Psychology	21		21	46	79	125	51	83	134
Undecided				29	129	158	41	152	193
Total	87	1	88	240	548	788	280	587	867

Gender and Major

	Summer 2007			Fall 2007			Spring 2008		
	Female	Male	Total	Female	Male	Total	Female	Male	Total
Biology		2	2	67	40	107	62	37	99
Business	36	29	65	161	183	344	173	202	375
Information Technology				10	44	54	14	52	66
Psychology	19	2	21	98	27	125	98	36	134
Undecided				80	78	158	102	91	193
Total	55	33	88	416	372	788	449	418	867

Source of all items on the page: Revised Student Information Reporting System (SIRS)

Class Level in Biology

	Summer 2007		Fall 2007		Spring 2008	
	#	%	#	%	#	%
Freshman			63	58.9	59	59.6
Sophomore			12	11.2	9	9.1
Junior	1	50	20	18.7	14	14.1
Senior			9	8.4	17	17.2
All Others	1	50	3	2.8		
Total	2	100	107	100	99	100

Class Level in Business

	Summer 2007		Fall 2007		Spring 2008	
	#	%	#	%	#	%
Freshman			155	45.1	161	42.9
Sophomore	8	12.3	42	12.2	42	11.2
Junior	44	67.7	111	32.3	107	28.5
Senior	12	18.5	32	9.3	65	17.3
All Others	1	1.5	4	1.2		
Total	65	100	344	100	375	100

Class Level in Information Technology

	Summer 2007		Fall 2007		Spring 2008	
	#	%	#	%	#	%
Freshman			42	77.8	53	80.3
Sophomore			5	9.3	4	6.1
Junior			7	13	8	12.1
Senior					1	1.5
All Others						
Total			54	100	66	100

Class Level in Psychology

	Summer 2007		Fall 2007		Spring 2008	
	#	%	#	%	#	%
Freshman			60	48	54	40.3
Sophomore	2	9.5	12	9.6	21	15.7
Junior	11	52.4	37	29.6	29	21.6
Senior	8	38.1	16	12.8	30	22.4
All Others						
Total	21	100	125	100	134	100

Students with an undeclared major are not tabulated herein.

Source of all items on the page: Revised Student Information Reporting System (SIRS)

Residency Type, Tuition Status

	Summer 2007		Fall 2007*		Spring 2008*	
	#	%	#	%	#	%
Georgia Residents	88		764		848	
Out of State			18		13	
Paying Tuition			14		7	
Tuition Waived**			4		6	
Out of Country			6		6	
Paying Tuition			5		5	
Tuition Waived**			1		1	
Total	88	100	788	100	867	

*There are discrepancies between the GGC Fact Book numbers and the numbers reported by USG SER in Fall 2007 and Spring 2008. However, the numbers reported herein are based on OIIT solicited corrections on fee waiver information and Academic Data Mart (ADM) data. The analysis is based on 1) citizenship status, 2) residence status, and 3) fee waiver information.

** Students with Tuition Waived status pay in-state tuition.

State of Origin

	Summer 2007		Fall 2007		Spring 2008	
	#	%	#	%	#	%
Arizona			2	0.3	1	0.1
California			1	0.1	1	0.1
Colorado			1	0.1	1	0.1
Florida			2	0.3	1	0.1
Illinois			1	0.1	1	0.1
Iowa			1	0.1	1	0.1
Massachusetts			1	0.1	1	0.1
Michigan			1	0.1		
New York			4	0.5	3	0.3
New Jersey			1	0.1	2	0.2
Ohio			3	0.4	4	0.5
South Carolina			1	0.1		
Virginia					2	0.2
Washington			1	0.1	1	0.1
Wyoming			1	0.1	1	0.1
Georgia	85	96.6	766	97.2	844	97.3
Unknown	3	3.4	1	.01	3	.3
Total	88	100	788	100	867	100

Source: Revised SIRS -- State of Legal Residence at Matriculation (Summer 2007) & ADM Legacy-like Table -- State of Origin (Fall 2007 and Spring 2008)

Georgia County of Origin

	Summer 2007		Fall 2007		Spring 2008	
	#	%	#	%	#	%
Appling			1	0.1	1	0.1
Banks			1	0.1		
Barrow	4	4.5	30	3.8	27	3.1
Cherokee			3	0.4	3	0.3
Clarke	1	1.1	5	0.6	7	0.8
Decatur					1	0.1
DeKalb	2	2.3	16	2.0	24	2.8
Forsyth			5	0.6	6	0.7
Franklin			2	0.3	2	0.2
Fulton	1	1.1	31	3.9	34	3.9
Glynn			1	0.1	1	0.1
Gwinnett	65	73.9	611	77.5	668	77.1
Habersham			3	0.4	2	0.2
Hall	1	1.1	12	1.5	12	1.4
Henry			1	0.1		
Jackson	1	1.1	3	0.4	5	0.6
Lee			1	0.1	1	0.1
Lumpkin			1	0.1	1	0.1
Muscogee					1	0.1
Oconee	1	1.1	3	0.4	3	0.3
Rockdale	1	1.1	3	0.4	2	0.2
Walton	8	9.1	33	4.2	39	4.5
Ware			1	0.1	1	0.1
Out of State/Unknown	3	3.4	21*	11.4	25*	2.9
Total	88	100	788	100	867	100

The total of out of state or unknown may not be consistent with that in the table of State of Origin as a result of missing data or coding error.

Source: Revised SIRS –County of Origin at Matriculation (Summer2007) & ADM Legacy-like Table – County of Origin (Fall 2007 and Spring 2008).

Citizenship Status

	Summer 2007		Fall 2007		Spring 2008	
	#	%	#	%	#	%
US Citizen	85	96.6	719	91.2	796	91.8
Non-US Citizen: Resident	3	3.4	63	8	65	7.5
Non-US Citizen: Alien			6	0.8	6	0.7
Total	88	100	788	100	867	100

Citizenship Status Codes, including U.S. citizen, Non-US citizen: Resident (i.e., Resident Alien), Non-US citizen: Alien (i.e., Non-resident Alien).

Source: Revised SIRS- Country of Citizenship

Country of Origin

	Summer 2007		Fall 2007		Spring 2008	
	#	%	#	%	#	%
AFGHANISTAN			1	0.1	1	0.1
BOSNIA AND HERZEGOVINA			2	0.3	4	0.5
CAMBODIA			1	0.1	1	0.1
CANADA					2	0.2
CHAD			1	0.1	1	0.1
CHINA			3	0.4	5	0.6
COLOMBIA			4	0.5	5	0.6
CROATIA			2	0.3	2	0.2
DENMARK			1	0.1	1	0.1
EGYPT			1	0.1		
ETHIOPIA			1	0.1	1	0.1
GAMBIA	1	1.1	1	0.1	1	0.1
GUYANA					1	0.1
HAITI			1	0.1		
HONDURAS			1	0.1	1	0.1
INDIA			6	0.8	6	0.7
JAMAICA	1	1.1	5	0.6	5	0.6
KOREA (NORTH)			2	0.3		
KOREA (SOUTH)			4	0.5	5	0.6
LIBERIA			6	0.8	5	0.6
MEXICO			3	0.4	2	0.2
NICARAGUA					1	0.1
NIGERIA			1	0.1	1	0.1
PAKISTAN			5	0.6	5	0.6
PERU			2	0.3	2	0.2
ROMANIA			2	0.3	2	0.2
TAIWAN	1	1.1	2	0.3	2	0.2
TRINIDAD AND TOBAGO			1	0.1	1	0.1
UNITED ARAB EMIRATES			1	0.1	1	0.1
VENEZUELA			2	0.3	1	0.1
VIETNAM			7	0.9	6	0.7
UNITED STATES	85	96.6	719	91.2	796	91.8
Total	88	100	788	100	867	100

Source: Revised SIRS- Country of Citizenship

Number of Countries Represented by Students of Non-US Citizenship

	Summer 2007	Fall 2007	Spring 2008
(USA is not included)	3	28	28

New Student Enrollment by Classification

	Summer 2007		Fall 2007		Spring 2008	
	#	%	#	%	#	%
Joint Enrollment*			1	0.2		
Beginning Freshman			335	51.4	88	39.3
Transfer Freshman			133	20.4	39	18.3
Transfer Sophomore	6	27.3	63	9.7	34	16.0
Transfer Junior	12	54.5	93	14.3	44	20.1
Transfer Senior	2	9.1	18	2.8	6	2.7
Transient Students	1	4.5	3	0.5	5	2.3
Other	1	4.5	6	0.9	3	1.4
Total	22	100	652	100	219	100

*GGC did not admit any Joint Enrollment students in Fall 2007. This one count in Joint Enrollment was miscoded.

Source: Revised SIRS and Academic Data Mart (ADM)

Top Feeder Institutions** for Transfer-in New Students

Summer 2007		Fall 2007		Spring 2008	
Georgia Perimeter Col.	8	Georgia Perimeter Col.	25	Georgia Perimeter Col.	33
University of Georgia	3	Gainesville College	5	Gwinnett Technical College	8
		Georgia State Univ.	4	Kennesaw State Univ.	6
		Valdosta State Univ.	3	Gainesville College	5
		Gwinnett Technical College	2	State University of West Georgia	5
		Georgia Institute of Technology	2	Georgia State University	4
		University of Georgia	2	Georgia Southern University	3
				East Georgia College	2
				North Georgia College & State University	2
				Southern Polytechnic State University	2
				Valdosta State University	2

** Listed herein are those institutions from which two or more students transferred to GGC in Summer 2007, Fall 2007, Spring 2008, respectively.

Source: Revised SIRS

Course Enrollment by School 2007-08

School of Business

		Summer 2007			Fall 2007			Spring 2008		
		Course Count	# Stud	Credit Hours	Course Count	# Stud	Credit Hours	Course Count	# Stud	Credit Hours
BUSA	Lower	1	15	45	2	43	129	3	57	171
	Upper	2	44	132	7	157	471	8	112	336
ECON	Lower				4	60	180	4	53	159
	Upper	1	8	24	1	1	3			
MGMT	Upper	2	26	78	11	151	453	15	215	645
ACCT	Lower				3	46	138	4	63	189
	Upper							3	20	60
MKTG	Upper				5	65	195	5	41	123
FINA	Upper				4	27	81	8	52	156
Subtotal	Lower	1	15	45	9	149	447	11	173	519
	Upper	5	78	234	28	401	1203	39	440	1320
Total		6	93	279	37	550	1650	50	613	1839

School of Liberal Arts

		Summer 2007			Fall 2007			Spring 2008		
		Course Count	# Stud	Credit Hours	Course Count	# Stud	Credit Hours	Course Count	# Stud	Credit Hours
PSYC	Lower				16	180	553	7	119	357
	Upper	3	35	77	9	64	194	16	138	381
SOCI	Lower	1	13	39	3	56	168	2	43	129
ANTH	Lower				2	30	90	2	39	117
ENGL	Lower				23	308	924	20	374	1122
FILM	Lower				2	42	126	3	60	90
FREN	Lower				2	13	39	2	18	54
HIST	Lower				7	148	444	13	242	726
POLS	Lower				6	108	324	7	121	363
RELN	Lower				3	61	183	3	65	195
SPAN	Lower				3	24	72	3	36	108
ARTS	Lower							2	37	111
MUSC	Lower							2	39	117
School Subtotal	Lower	1	13	39	67	970	2923	66	1193	3489
	Upper	3	35	77	9	64	194	16	138	381
Total		4	48	116	76	1034	3117	82	1331	3870

School of Science and Technology

		Summer 2007			Fall 2007			Spring 2008		
		Course Count	# Stud	Credit Hours	Course Count	# Stud	Credit Hours	Course Count	# Stud	Credit Hours
BIOL	Lower				20	162	324	26	241	513
	Upper				8	68	154	11	64	139
CHEM	Lower				16	138	276	20	178	356
GEOG	Lower				2	43	129	3	51	153
ITEC	Lower				16	264	1055	23	334	1326
	Upper				1	7	21	3	14	42
MATH	Lower				16	281	876	17	254	853
PHED	Lower				1	21	21	2	15	15
PHYS	Lower				8	44	88	8	58	109
School Subtotal	Lower				79	953	2769	99	1131	3325
	Upper				9	75	175	14	78	181
Total					88	1028	2944	113	1209	3506

Student Success

		Summer 2007			Fall 2007			Spring 2008		
		Course Count	# Stud	Credit Hours	Course Count	# Stud	Credit Hours	Course Count	# Stud	Credit Hours
ENGL	Lower				5	72	288	4	52	208
ESL	Lower				6	70	253	5	44	186
GGC	Lower				37	400	400	13	138	138
MATH	Lower				7	101	404	7	90	360
READ	Lower				3	37	148	1	12	48
RGTE	Lower							1	3	9
RGTT	Lower							3	9	0
School Subtotal	Lower				58	680	1493	34	348	949
Total					58	680	1493	34	348	949

All College

	Summer 2007			Fall 2007			Spring 2008		
	Course Count	# Stud	Credit Hours	Course Count	# Stud	Credit Hours	Course Count	# Stud	Credit Hours
Lower Level	2	28	84	213	2752	7632	210	2845	8282
Upper Level	8	113	311	46	540	1572	69	656	1882
Total	10	141	395*	259	3292	9204	279	3501	10164

Due to coding errors some courses and their enrolled students were not reported in Census I data collection, but were reported in Census II for Summer 2007. However all courses offered in Summer 2007 reported herein were combined together in this analysis.

Source: Curriculum Inventory Reporting System (CIR) & USG Semester Credit Hour Summary.

Class Size by School 2007-08

Business

	Summer 2007		Fall 2007		Spring 2008	
1 – 15 students per section	4	66.7%	20	54.1%	34	68.0%
16 – 30 students per section	2	33.3%	17	45.9%	15	30.0%
31 + students per section					1	2.0%
Total # of Classes	6		37		50	
Overall Average Class Size	15.5		14.9		12.3	

Liberal Arts

	Summer 2007		Fall 2007		Spring 2008	
1 – 15 students per section	4	100%	40	52.6%	27	32.9%
16 – 30 students per section			36	47.4%	55	67.1%
Total # of Classes	4		76		82	
Overall Average Class Size	12.0		13.6		16.2	

Science and Technology

	Summer 2007		Fall 2007		Spring 2008	
1 – 15 students per section			63	71.6%	80	70.8%
16 – 30 students per section			25	28.4%	33	29.2%
Total # of Classes			88		113	
Overall Average Class Size			11.7		10.7	

Student Success

	Summer 2007		Fall 2007		Spring 2008	
1 – 15 students per section			46	79.3%	31	91.2%
16 – 30 students per section			12	20.7%	3	8.8%
Total # of Classes			58		34	
Overall Average Class Size			11.7		10.2	

All College

	Summer 2007		Fall 2007		Spring 2008	
1 – 15 students per section	8	80.0%	169	65.3%	172	61.6%
16 – 30 students per section	2	20.0%	90	34.7%	106	38.0%
31 + students per section					1	0.4%
Total # of Classes	10		259		279	
Overall Average Class Size	14.1		12.7		12.5	

Source: Curriculum Inventory Reporting System (CIR)

Student Financial Aid 2007-08

Semester Details

	Award Year 2007			Award Year 2008		
Fall Semester	# of Awards	Amount Awarded	Average Awarded	# of Awards	Amount Awarded	Average Awarded
State Grants/ Scholarships						
HOPE Scholarships	32	37463.00	1170.72	181	224432.00	1239.96
State Other Grants				1	1000.00	1000.00
Institutional Grants/ Scholarships						
GGC Foundation	22	18706.88	850.31	138	188746.20	1367.73
Outside Donors'				2	3453.00	1726.50
Duplicated Recipients	54	56169.88	1040.18	322	417631.20	1296.99
Unduplicated Recipients	53	56169.88	1059.81	305	417631.20	1369.28
Spring Semester	# of Awards	Amount Awarded	Average Awarded	# of Awards	Amount Awarded	Average Awarded
State Grants/ Scholarships						
HOPE Scholarships	32	34195.00	1068.59	165	207249.00	1256.05
Institutional Grants/ Scholarships						
GGC Foundation	19	18449.48	971.03	122	174941.70	1433.95
Outside Donors'	1	816.00	816.00	2	3483.00	1741.50
Duplicated Recipients	52	53460.48	1028.09	289	385673.70	1334.51
Unduplicated Recipients	49	53460.48	1091.03	273	385673.70	1412.72
Summer Semester	# of Awards	Amount Awarded	Average Awarded	# of Awards	Amount Awarded	Average Awarded
State Grants/ Scholarships						
HOPE Scholarships	24	16998.00	708.25	67	56664.00	845.73
Institutional Grants/ Scholarships						
GGC Foundation	13	6057.85	465.99	28	19240.00	687.14
Duplicated Recipients	37	23055.85	623.13	95	75904.00	798.99
Unduplicated Recipients	36	23055.85	640.44	86	75904.00	882.60

Student Financial Aid award year begins with Fall term and ends with Summer term of the following year.

Award Year Total

	Award Year 2007			Award Year 2008		
State Grants/ Scholarships						
HOPE Scholarships	88	88656.00	1007.45	413	488345.00	1182.43
State Other Grants				1	1000.00	1000.00
Institutional Grants/ Scholarships						
GGC Foundation	54	43214.21	800.26	288	382927.90	1329.61
Outside Donors'	1	816.00	816.00	4	6936.00	1734.00
Duplicated Recipients	143	132686.21	927.88	706	879208.90	1245.34
Unduplicated Recipients	82	132686.21	1618.12	324	879208.90	2713.61

Source: Student Financial Aid

Cost of Attendance 2007-08

Components*	In-State Students	Out of State Students
Tuition/Fees	4,400.00	10,152.00
Books and Supplies	1,000.00	1,000.00
Room and Board	8,800.00	8,800.00
Transportation	3,400.00	3,400.00
Personal/Miscellaneous	3,800.00	3,800.00
Total	21,400.00	27,152.00

**The Tuition and Fees component of the Cost of Attendance budget contains the tuition and mandatory fees for an academic year as well as any potential fees that a student may incur due to enrolling in courses that have additional fees.*

The Cost of Attendance budget for 2007-08, same as that for 2006-07, was generally projected out of a maximum estimate of 12-month enrollment for a student. As GGC is a new institution, the College's historical information was unavailable; hence, it was not taken into account while the estimation was calculated. For 2007-08, this may be an over-estimated budget.

Source: Student Financial Aid

Tuition and Fees 2007-08

In-State Tuition

New and Existing Students	Tuition per credit hour
Incoming freshmen	\$78
Continuing and transfer students with less than 60 attempted hours (began at a USG school between Fall 2006 and Summer 2007)	\$68
Continuing and transfer students with less than 60 attempted hours (began at a USG school before Fall 2006)	\$74
Continuing and transfer students with more than 60 attempted hours (first time at a USG school)	\$120
Continuing and transfer students with more than 60 attempted hours (began at a USG school between Fall 2006 and Summer 2007)	\$107
Continuing and transfer students with more than 60 attempted hours (began at a USG school before Fall 2006)	\$113

Out-of-State Tuition

New and Existing Students	Tuition per credit hour
Incoming freshmen	\$312
Continuing and transfer students with less than 60 attempted hours (began at a USG school between Fall 2006 and Summer 2007)	\$268
Continuing and transfer students with less than 60 attempted hours (began at a USG school before Fall 2006)	\$296
Continuing and transfer students with more than 60 attempted hours (first time at a USG school)	\$478
Continuing and transfer students with more than 60 attempted hours (began at a USG school between Fall 2006 and Summer 2007)	\$427
Continuing and transfer students with more than 60 attempted hours (began at a USG school before Fall 2006)	\$449

2007-08 Fees (All fees listed are per semester)

Activity Fee = \$35

Parking Fee = \$100

Recreation = \$40

Student Center = \$100

Technology = \$75

Science Lab = \$30 per lab (only for students taking a lab)

Parking Fine = \$30

ID Replacement = \$30

Non Sufficient Funds Fine = \$25 (or 5%, whichever greater)

Application fee = \$15

Source: Georgia Gwinnett College Catalog 2007-2008



Georgia Gwinnett
COLLEGE



Faculty and Staff

www.ggc.edu

Human Resources 2007-08

Definitions of Faculty: Faculty information reported in this book falls under Corps of Instruction and Instructional Faculty (a subset of the Corps of Instruction), of which the descriptions given in *USG Faculty Definitions* are extracted as follows:

Corps of Instruction: Full-time professors, associate professors, assistant professors, instructors, and lecturers are considered the Corps of Instruction and must be approved by the Board of Regents prior to their initial appointment upon recommendation of the Chancellor and the President of the institution. Promotion to a higher rank must also be approved by the Board upon recommendation of the Chancellor and the President of the institution.

In other words, full-time faculty and allied professional staff, inclusively, are members of the corps of instruction, that include

full-time teaching faculty, research faculty, general administrators, academic administrators, public service faculty, librarians, and counselors who hold Board-approved academic rank; are tenured, on tenure track, or in positions that are not tenure track; and are employed on at least an academic year contract.

[Instructional personnel](#) are a subset of this group.

According to the USG Employee Category definitions **Instructional Personnel** are defined by **Faculty** and **Other**. (<http://www.usg.edu/research/faculty/employees/employee-defs.html>)

Faculty: persons whose primary assignments are instruction, research, or public service, who hold academic rank and are tenured, on tenure track, or in positions that are not tenure track; includes department chairpersons if their principle activity is instructional; includes faculty on nine-month and twelve month contracts.

Other: persons whose primary assignments are instruction, research, or public service; who do not hold instructional rank, or who are not on at least academic contract, or who hold a non-tenure type position.

GGC's Faculty: Full-time faculty at Georgia Gwinnett College (GGC) are appointed into **non-tenure-track** positions. GGC faculty members are eligible for renewable appointments of three or five years' duration or one-year non-renewable appointments. GGC renewable appointments were approved by the Board of Regents effective June 2007.

Fall 2007 Data Summary*

Full-time Corps of Instruction: 103	Instructional Faculty: 86	College Employees: 219
Administration: 15	Full-time: 82	Full-time: 188
Instruction: 82	Part-time: 4	Part-time: 31
Library: 6	Full-time Equivalent (FTE)**: 83.1	

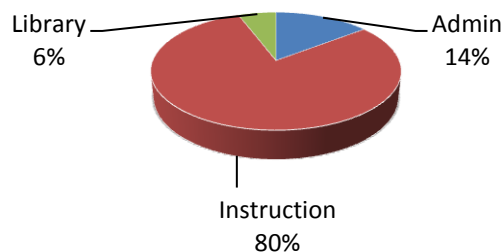
*Only Fall 2007 data will be reported for this section of the Fact Book. Data from Fall 2007 and Spring 2008 were so similar that the Fall 2007 data gives a fair representation of the Human Resources information.

** Number of full-time faculty + (Total number of course hours taught by part-time faculty only/standard full-time teaching load in course hours).

Corps of Instruction Fall 2007

Function Area

	#	%
Administration*	15	14.6
Instruction	82	79.6
Library	6	5.8
Total	103	100



* Administration includes the positions of president, vice presidents, deans, and other positions of BCAT=1, at which the administrators have faculty ranks.

Rank and Function Area

	Professor		Associate Professor		Assistant Professor		Instructor		Total	
	#	%	#	%	#	%	#	%	#	%
Administration	6	60	4	15.4	5	8.3			15	14.6
Instruction	4	40	22	84.6	54	90	2	28.6	82	79.6
Library					1	1.7	5	71.4	6	5.8
Total	10	100	26	100	60	100	7	100	103	100

Gender and Function Area

	Female		Male		Total	
	#	%	#	%	#	%
Administration	8	15.1	7	14	15	14.6
Instruction	40	75.5	42	84	82	79.6
Library	5	9.4	1	2	6	5.8
Total	53	100	50	100	103	100

Ethnicity and Function Area

	White, Non-Hispanic		Other		Total	
	#	%	#	%	#	%
Administration	13	19.1	2	5.7	15	14.6
Instruction	49	72.1	33	94.3	82	79.6
Library	6	8.8			6	5.8
Total	68	100	35	100	103	100

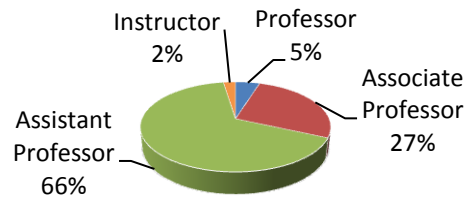
Highest Earned and Function Area

	Master's		Doctorate		Rank Total	
	#	%	#	%	#	%
Administration	1	10.0	14	15.1	15	14.6
Instruction	3	30.0	79	84.9	82	79.6
Library	6	60.0			6	5.8
Total	10	100	93	100	103	100

Full-time Instructional Faculty Fall 2007

Faculty Rank

	#	%
Professor	4	4.9
Associate Professor	22	26.8
Assistant Professor	54	65.9
Instructor	2	2.4
Total	82	100



Highest Earned Degree and Rank

	Master's		Doctorate		Rank Total	
	#	%	#	%	#	%
Professor			4	5.1	4	4.9
Associate Professor			22	27.8	22	26.8
Assistant Professor	1	33.3	53	67.1	54	65.9
Instructor	2	66.7			2	2.4
Total	3	100	79	100	82	100

Gender and Rank

	Female		Male		Total	
	#	%	#	%	#	%
Professor			4	9.5	4	4.9
Associate Professor	13	32.5	9	21.4	22	26.8
Assistant Professor	26	65	28	66.7	54	65.9
Instructor	1	2.5	1	2.4	2	2.4
Total	40	100	42	100	82	100

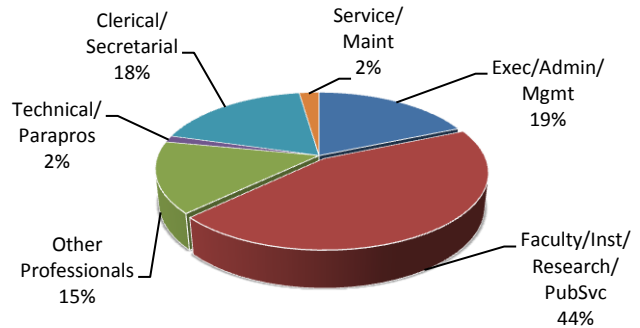
Ethnicity and Rank

	White, Non-Hispanic		Other		Total	
	#	%	#	%	#	%
Professor	2	4.1	2	6.1	4	4.9
Associate Professor	12	24.5	10	30.3	22	26.8
Assistant Professor	34	69.4	20	60.6	54	65.9
Instructor	1	2	1	3.0	2	2.4
Total	49	100	33	100	82	100

College Employees Fall 2007

Occupational Classification

College Employees*	#	%
Exec/Admin/Managerial	41	18.7
Faculty/Instruction/Research/Public Service	97	44.3
Other Professionals	33	15.1
Technical/Para-professionals	3	1.4
Clerical/Secretarial	40	18.3
Service/Maintenance	5	2.3
Total	219	100

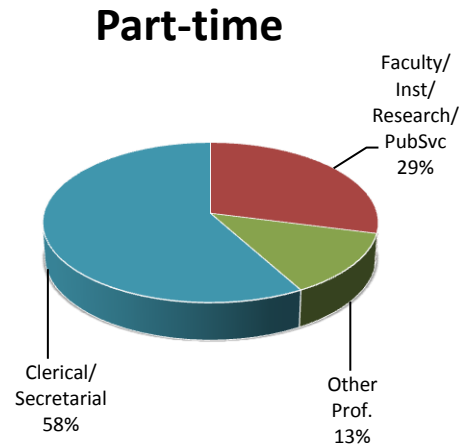
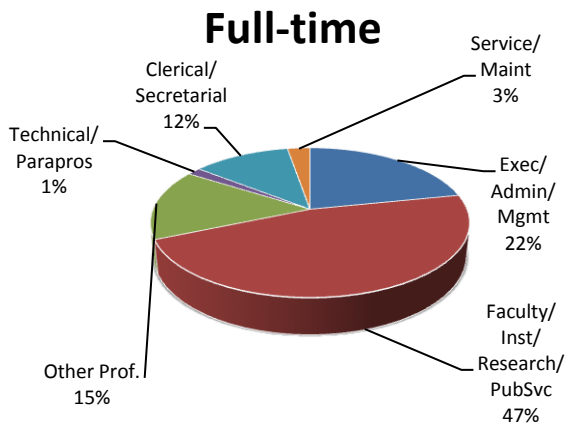


* College employees include corps of instruction and all other employees except for student assistants.

Employment Status and Occupational Classification

	Full-time		Part-time		Total	
	#	%	#	%	#	%
Executive/Admin/Managerial	41**	21.8			41	18.7
Faculty/Instruction/Research/Public Service	88	46.8	9	29.0	97	44.3
Other Professionals	29**	15.4	4	12.9	33	15.1
Technical/Para-professionals	3**	1.6			3	1.4
Clerical/Secretarial	22**	11.7	18	58.1	40	18.3
Service/Maintenance	5**	2.7			5	2.3
Total	188	100	31	100	219	100

** Numbers presented here are different from that in the USG report due to the classification coding issue in the HR source data; however, this fact book is based on the dataset with corrected coding.



Gender of College Employees

	Female		Male		Total	
	#	%	#	%	#	%
Executive/Admin/Managerial	18	14.1	23	25.3	41	18.7
Faculty/Instruct/Research/PubSvc	52	40.6	45	49.5	97	44.3
Other Professionals	21	16.4	12	13.2	33	15.1
Technical/Para-professionals	1	0.8	2	2.2	3	1.4
Clerical/Secretarial	36	28.1	4	4.4	40	18.3
Service/Maintenance			5	5.5	5	2.3
Total	128	100	91	100	219	100

Ethnicity of College Employees

	Black/Afr American		Asian		Hispanic/Latino		White		Other		Total	
	#	%	#	%	#	%	#	%	#	%	#	%
Executive/Admin/Managerial	5	12.8	2	9.1	2	28.6	32	21.5			41	18.7
Faculty/Instruct/Research/PubSvc	15	38.5	15	68.2	4	57.1	62	41.6	1	50.0	97	44.3
Other Professionals	10	25.6	1	4.5			22	14.8			33	15.1
Technical/Para-professionals			1	4.5			2	1.3			3	1.4
Clerical/Secretarial	6	15.4	3	13.6	1	14.3	29	19.5	1	50.0	40	18.3
Service/Maintenance	3	7.7					2	1.3			5	2.3
Total	39	100	22	100	7	100	149	100	2	100	219	100

Source of all items on the Human Resources section: Data provided by the Office of Human Resources



Georgia Gwinnett
COLLEGE

Financial Information and Facilities

www.ggc.edu

Financial Information 2007-08

Statement of Revenues, Expenses, and Changes in Net Assets

REVENUES	
Operating Revenues	
Student Tuition and Fees (net of allowance for doubtful accounts)	\$2,136,338
Less: Scholarship Allowances	(23,673)
Sales and Services	74,039
Rents and Royalties	258,376
Auxiliary Enterprises	
Bookstore	133,839
Parking/Transportation	777,950
Health Services	0
Intercollegiate Athletics	0
Other Organizations	75,485
Other Operating Revenues	106,654
Total Operating Revenues	<u>3,539,008</u>
EXPENSES	
Operating Expenses	
Salaries:	
Faculty	6,348,618
Staff	7,153,276
Employee Benefits	3,024,920
Other Personal Services	112
Travel	206,196
Utilities	884,300
Supplies and Other Services	5,289,580
Depreciation	1,876,438
Total Operating Expenses	<u>24,783,440</u>
Operating Income (loss)	<u>(21,244,432)</u>
NON-OPERATING REVENUES (EXPENSES)	
State Appropriations	23,007,927
Gifts	12,449
Investment Income (endowments, auxiliary and other)	100,151
Interest Expense (capital assets)	(1,070,723)
Other Non-Operating Revenues	17,387
Net Non-Operating Revenues	22,067,191
Income Before Other Revenues, Expenses, Gains, or Loss	822,759
Capital Grants and Gifts	
State	2,376,793
Total Other Revenues	<u>2,376,793</u>
Increase in Net Assets	<u>3,199,552</u>
NET ASSETS	
Net Assets-beginning of year, as originally reported	30,810,843
Prior Year Adjustments	0
Net Assets-beginning of year, restated	30,810,843
Net Assets-End of Year	<u>\$34,010,395</u>

Revenue by Source

	June 30, 2007	June 30, 2008
Operating Revenue		
Tuition and Fees	\$739,822	\$2,112,665
Sales and Services	2,936	74,039
Auxiliary	1,229,000	987,274
Other	404,829	365,030
Total Operating Revenue	2,376,587	3,539,008
Non-operating Revenue		
State Appropriations	10,943,548	23,007,927
Gifts	0	12,449
Investment Income	71,873	100,151
Other	319,631	17,387
Total Non-operating Revenue	11,335,052	23,137,914
Capital Gifts and Grants		
State	2,939,953	2,376,793
Total Capital Gifts and Grants	2,939,953	2,376,793
Total Revenues	\$16,651,592	\$29,053,715

Expenses (by Functional Classification)

	June 30, 2007	June 30, 2008
Operating Expenses		
Instruction	\$2,606,689	\$9,813,577
Research	0	0
Public Service	0	0
Academic Support	2,090,785	3,143,845
Student Services	609,100	1,508,238
Institutional Support	4,443,240	8,138,105
Plant Operations and Maintenance	1,511,235	1,629,343
Scholarships and Fellowships	0	0
Auxiliary Enterprises	1,307	550,332
Unallocated Expenses	302	0
Patient Care (MCG only)	0	0
Total Operating Expenses	11,262,658	24,783,440
Non-operating Expenses		
Interest Expense (Capital Assets)	781,034	1,070,723
Total Expenses	\$12,043,692	\$25,854,163

Source: The Office of Accounting Services

Facilities 2007-08

Campus Land

- The total acreage as of July 1 2007 --165 acres
- New Acquisitions – 7 acres purchased in 2007-2008
- The total acreage as of June 30, 2008, was 172 acres.

Physical Facilities

- Valentine Building- designated Building E- was purchased in 2007 by the GGC Foundation and occupies 5 acres.
- Fitness Center (Fitness International) - designated Building F- was purchased in February 2008 and occupies 2 acres.

Building	Major Use*	Initial Occupancy	Area Sq. Ft.
A	Aca./Adm./Gen. Classroom/Laboratory Administrative Office	January 2002	124,000
B	Aca./Adm. Classroom Administrative Office	August 2002	108,000
C	Aca. Classroom Faculty Office	Phase I: January, 2006 Phase II: August, 2007	31,000 25,000 Total: 56,000
D**	Stu. Student Services, Enrollment Management, Student Accounts	October, 2007	70,000
E (Valentine)		Purchased 2007, leased back to the current user and former owner.	70,000
F***	Fitness Center	May, 2008	40,000
Parking Deck	Student Parking	March, 2008	734 cars

*Major Use Category: Administration (Adm), Academic (Aca), Student Services (Stu), General Use (Gen.)

** Also named as **Student Services Center**

*** Also named as **Fitness Center**

Source: The Office of Facilities



Georgia Gwinnett
COLLEGE



About Gwinnett County

www.ggc.edu

Fast Facts About Gwinnett County 2007-08

Current Population of Gwinnett County: 776,347

*Source: Gwinnett County Forecasting and Research
Division estimate, 2007*

Geography

- Approximately 30 miles northeast of Atlanta
- County seat: Lawrenceville, GA
- 437 square miles
- Adjacent counties: Barrow, DeKalb, Forsyth, Fulton, Hall, Jackson, Rockdale, and Walton
- 80 percent of the U. S. population is within a two-hour flight
- Gateway to metro Atlanta from north and northeast via I-85 and I-985
- Easy access to University of Georgia (at Athens) via University Parkway/GA Highway 316
- Minutes from scenic Lake Lanier
- Home to 15 municipalities



History

- Created in 1818 by state legislature
- Some of the land had been part of Jackson County
- The rest was frontier land ceded to the state by the Creek Indians
- Named for Button Gwinnett, signer of the Declaration of Independence

Source: <http://www.gwinnettcounty.com> Page: About Gwinnett>Fast Facts